

AUCTION ONSITE & WEBCAST • January 24th, 2017 10:00 AM CST www.terrapointllc.com or 877.772.5998

Inspection: 1/23 - 9:00AM to 4:00PM or by appointment • 2405 Hackberry Lane, Conroe, TX

HOUSTON AREA TRANSPORTATION, EXCAVATION & TRUCK SALE LATE MODEL: CAT • PETERBILT • MACK • DEERE • BOBCAT • INTERNATIONAL

(40+) TRUCK TRACTORS • (11) DUMP TRUCKS • EXCAVATORS • DOZERS • MINI EX • BACKHOES • SKID STEERS
RTVS • WIRE LINE TRUCKS • PAVERS • BROOMS • COMPACTORS • TRENCHERS • CRUSHERS • LIFTS • CRANE TRUCKS
WATER TRUCKS • CEMENT TRUCKS • DUMP TRAILERS • LOWBOYS • (50+) TRAILERS • FORKLIFTS & MORE



2013 CATERPILLAR 320EL RR
CRAWLER EXCAVATOR



(6) 2012 PETERBILT 388 TRUCK TRACTORS



(2) 2013 CATERPILLAR
D6T XW CRAWLER DOZERS



2012 JOHN DEERE 350G EXCAVATORS



(11) LATE MODEL DUMP TRUCKS -
CAT, MACK & KENWORTH



2014 JCB 3CX BACKHOE - 16 HOURS



(4) 2007 INTERNATIONAL
& STERLING CRANE TRUCKS



40+ PETE, MACK, FREIGHTLINER
& KENWORTH TRUCK TRACTORS



2016 CATERPILLAR 262D SKID STEER



EQUIPMENT ADDED DAILY - OVER \$7MM AUCTION VALUATION



HOUSTON AREA 1/24 - 10:00 AM CST



Complete Lot List Posted With All Equipment - www.terrapointllc.com

(20+) MACK & PETE TRUCK TRACTORS 2000 - 2012



2012

(40+) TRUCK TRACTORS AS NEW AS 2012



2012

(4) 2007 INTERNATIONAL MODEL 7400 TRUCKS



2007

To Consign Equipment - Call 214-247-7330

TRUCK TRACTORS

2012 Peterbilt Model 388 Truck Tractor, Day Cab, T/A, Eaton Fuller 10-Spd Trans, Paccar 12.9L 485 HP Diesel Engine, Power Window/ Door, With Wet Kit, Dual Exhaust Stack, Single Fuel Tank, 12,000# Front, (2) 20,000# Rears, 11R24.5 Tires, Aluminum Wheels, Air Ride Suspension, 10,201 Hours, 181,163 Miles

2012 Peterbilt Model 388 Truck Tractor, Day Cab, T/A, Eaton Fuller 10-Spd Trans, Paccar 12.9L 485 HP Diesel Engine, Power Window/ Door, With Drum Blower, Dual Exhaust Stack, Dual Fuel Tank, 12,000# Front, (2) 20,000# Rears, 11R24.5 Tires, Aluminum Wheels, Air Ride Suspension, 10,464 Hours, 215,780 Miles

2012 Peterbilt Model 388 Truck Tractor, Day Cab, T/A, Eaton Fuller 10-Spd Trans, Paccar 12.9L 485 HP Diesel Engine, Power Window/ Door, With Wet Kit, Dual Exhaust Stack, Dual Fuel Tanks, 12,000# Front, (2) 20,000# Rears, 11R24.5 Tires, Aluminum Wheels, Air Ride Suspension, 243,730 Miles

2012 Peterbilt Model 388 Truck Tractor, Day Cab, T/A, Eaton Fuller 10-Spd Trans, Paccar 12.9L 485 HP Diesel Engine, Power Window/ Door, With Wet Kit, Dual Exhaust Stack, Dual Fuel Tanks, 12,000# Front, (2) 20,000# Rears, 11R24.5 Tires, Aluminum Wheels, Air Ride Suspension, 13,928 Hours, 249,102 Miles

2012 Peterbilt Model 388 Truck Tractor, Day Cab, T/A, Eaton Fuller 10-Spd Trans, Paccar 12.9L 485 HP Diesel Engine, Power Window/ Door, With Wet Kit, Dual Exhaust Stack, Single Fuel Tank, 12,000# Front, (2) 20,000# Rears, 11R24.5 Tires, Aluminum Wheels, Air Ride Suspension, 12,134 Hours, 240,199 Miles

2012 Mack Model GU713 Truck Tractor, 10-Spd Trans, Air Ride Suspension, Engine Brakes, Very Nice Truck, 190,000 Miles

2012 Mack Model CHU613 Truck Tractor, T/A, Day, 163,000 Miles

2011 Mack Model CHU613 Truck Tractor, T/A, Day Cab, Wet Kit 13-Spd Trans, Camelback Suspension, Wet Line Kit, 189,000 Miles

2010 Mack Model GU713 Truck Tractor, MP8-425M Engines, Allison Auto Trans, Cold A/C, 266,269 Miles

2008 Freightliner Truck Tractor, Mercedes Benz Engine 460 HP, 10-Speed Transmission, Air Ride Suspension, 14,000# Front, 44,000# Rears, Differential Lock, Nice Interior, 329,130 Miles

2007 Mack Model CHN613 Truck Tractor, T/A 3rd Airlift Axle 276,000 Miles, Mack AC 460HP Engine, Engine Brake, Air Lift Pusher Axle, 14,000# Front, 44,000# Rears, 261 Wheel Base, 18-Speed Maxitorque Transmission, 276,000 Miles

2005 Peterbilt Model 379 Truck Tractor, Day Cab, T/A, Eaton 10-Spd Manual Trans, Cat C-13 Diesel Engine, Engine Brake, Air Ride Susp, Manual Window/Door, 12,000 LB Front, (2) 17,000 LB Rear, With Aluminum Head Ache Rack, Dual Fuel Tanks, Dual Exh Stack, 11R24.5 Tires, Aluminum Wheels, 530,445 Miles

2005 Peterbilt Model 379 Truck Tractor, Day Cab, T/A, Eaton 10-Spd Manual Trans, Cat C-13 Diesel Engine, Engine Brake, Air Ride Susp, Manual Window/Door, 12,000 LB Front, (2) 19,000 LB Rear, With Aluminum Head Ache Rack, Dual Fuel Tanks, Dual Exh Stack, 11R24.5 Tires, Aluminum Wheels, 913,442 Miles

2007 Freightliner Century Class S/T Truck Tractor, Day Cab, T/A, Eaton 10 Spd Manual Trans, Benz 450 HP 12.8L Diesel Engine, Engine Brake, Air Ride Susp, Electric Window/Door, 12,000 LB Front, (2) 20,000 LB Rear, With Wet Kit, Dual Fuel Tanks, Single Exh Stack, 11R22.5 Tires, Steel Wheels, 648311 Miles

2007 Freightliner Century Class S/T Truck Tractor, Day Cab, T/A, Eaton 10-Spd Manual Trans, Mercedes 12.8L 450 HP Diesel Engine, Engine Brake, Air Ride Susp, Elec Window/Door, With Aluminum Head Ache Rack, Dual Fuel Tanks, Single Exh Stack, 11R24.5 Tires, Steel Wheels, 614,800 Miles

2006 Kenworth Truck Tractor, Tri Axle

2005 Freightliner Model Columbia 120 Truck Tractor, Day Cab, T/A, Eaton 10-Spd Manual Trans, Detroit Model Series 60 14L 302 HP Diesel Engine, Engine Brake, Air Ride Susp, Manual Window/ Door, With Aluminum Head Ache Rack, Dual 120 Gal Fuel Tanks, Single Exh Stack, 11R22.5 Tires, Steel Wheels, 719,996 Miles

2005 Kenworth Model T800 Truck Tractor

2004 Kenworth Model T800 Truck Tractor, Day Cab, T/A, Eaton Fuller Manual Trans, Cat Model C15 Diesel Engine, Engine Brake, Air Ride Susp, Manual Window/ Door, With Head Ache Rack, Dual Fuel Tanks, Dual Exh Stack, 11R24.5 Tires, Aluminum Wheels, 404,294 Miles

(2) 2003 Peterbilt Model 379 Truck Tractor, Day Cab, T/A, 640,382 Miles, 725,462 Miles

2003 Kenworth Model W900L Truck Tractor, 60" Sleeper Cab, T/A, Eaton Manual Trans, Cat Model C15 14.6L Diesel Engine, Engine Brake, Air Ride Susp, Manual Window/ Door, With Aluminum Head Ache Rack, Dual Fuel Tanks, Dual Exh Stack, 11R22.5 Tires, Aluminum Wheels, 128,080 Miles

2004 Freightliner Model Columbia Truck Tractor

2001 Peterbilt Model 379 Truck Tractor, Day Cab, T/A, 3rd Airlift Axle, Eaton Fuller Manual Trans, Cat 14.6L Diesel Engine, Engine Brake, Air Ride Susp, Manual Window/ Door, 12,000 LB Front, (2) 18,000 LB Rear, With Wet Kit, Aluminum Head Ache Rack, Dual Fuel Tanks, Dual Exh Stack, 11R24.5 Tires, Aluminum Wheels, 329,158 Miles

2000 Peterbilt Model 379 Truck Tractor, Day Cab, T/A, 45,573 Miles

1999 Mack Model CS 200P Truck Tractor, Cab Chassis, 179,000 Miles

1999 Peterbilt Model 379 Truck Tractor

1998 Mack Model CS 250P Truck Tractor, Cab Chassis, 266,698 Miles

1998 Peterbilt Model 379 Truck Tractor, 60" Sleeper Cab, T/A, Eaton Fuller Manual Trans, CAT Model 3406E 475 HP Diesel Engine, Engine Brake, Air Ride Susp, Man Window/ Door, 12,000 LB Front, (2) 18,000 LB Rear, With Wet Kit, Aluminum Head Ache Rack, Dual Fuel Tanks, Dual Exh Stack, 11R24.5 Tires, Aluminum Wheels, 970,226 Miles

2001 Kenworth Model T800 Truck Tractor

2000 Freightliner Model FLD Truck Tractor, Day Cab, T/A, Eaton 10 Spd Manual Trans, Detroit Diesel Series 60 250 HP 12.7L Diesel Engine, Engine Brake, Air Ride Susp, Manual Window/ Door, 12,000 LB Front, (2) 20,000 LB Rear, With Dual 120 Gal Fuel Tanks, Single Exh Stack, 11R24.5 Tires, Steel Wheels, 666,505 Miles

2000 Freightliner Model FLD Truck Tractor, Day Cab, T/A, Rockwell 9 Spd Manual Trans, CAT Model 3406 375 HP Diesel Engine, Engine Brake, Air Ride Susp, Manual Window/ Door, 12,000 LB Front, (2) 20,000 LB Rear, With Dual Fuel Tanks, Single Exh Stack, 11R24.5 Tires, Steel Wheels, 874,835 Miles

1998 Freightliner Model FLD Truck Tractor, 42" Sleeper Cab, T/A, Eaton Manual Trans, Detroit Diesel Series 60 12.7L 220 HP Diesel Engine, Engine Brake, Air Ride Susp, Manual Window/ Door, 12,000 LB Front, (2) 20,000 LB Rear, With Aluminum Head Ache Rack, Dual 100 Gal Fuel Tanks, Single Exh Stack, 11R22.5 Tires, Steel Wheels, 408,247 Miles

1996 Peterbilt Model 379 Truck Tractor, Quad Axle

1995 Kenworth Model W900B Winch Truck Tractor, Day Cab, T/A, Eaton 8-Spd Hi/Lo Manual Trans, Cat Model 3406E Diesel Engine, Engine Brake, Air Ride Susp, Manual Window/ Door, With Braden Model AMS20-18B 2.5 Ton Winch, PTO, Head Ache Rack, Dual 120 Gal Fuel Tanks, Dual Exh Stack, 11R24.5 Tires, Aluminum Wheels

Freightliner Model FL70 Truck Tractor

2012 CAT MODEL CT660S DUMP TRUCK



2012

(9) MACK DUMP TRUCKS 2005 - 2013



2013

(4) 2006 - 07 INTERNATIONAL & STERLING CRANE TRUCKS



2007

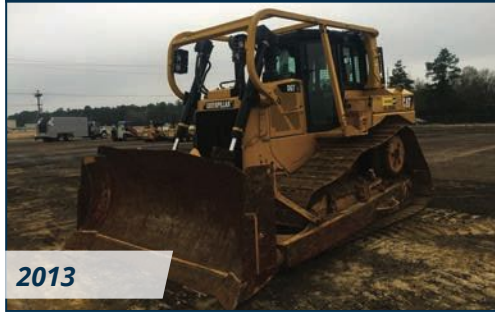
AUCTION: Onsite & Webcast - January 25th, 2017 • Conroe, TX • 10:00AM CST

**2012 & 2013 CAT
& DEERE EXCAVATORS**



2013

**(2) 2013 CATERPILLAR D6T XW
CRAWLER DOZERS**



2013

(6) JCB & CASE BACKHOE LOADERS



2014

Over \$7MM Auction Valuation - Equipment Added Daily

DUMP TRUCKS

- 2012 CAT Model CT660S Dump Truck, Cat CT13 Motor 430 HP, Engine Brake, Automatic Transmission, Virgins All Round, 146,000 Miles
- 2013 Mack Model GU713 Dump Truck, Tandem Axle Dump, 10-Speed Trans, Camelback Suspension, Brand New Ox Dump Bed, 104,000 Miles
- 2012 Mack Model GU713 Dump Truck, Tandem Axle Dump, Mack Engine, 10-Speed Transmission, Camelback Suspension, Brand New 16' Dump Bed, 200,000 Miles
- 2009 Mack Model GU713 Dump Truck, Mack MP8 485hp Engine, 18-Speed Transmission, 44,000# Rears, 16 Ft Steel Box, Tow Hitch With Receiver Lines, 202,000 Miles
- 2007 Mack Model CTP713 Dump Truck, T/A 405 HP, Camelback Suspension, 10-Speed Transmission, Engine Brake, 16ft Steel Box In Great Condition, Tow Hitch Plate With Air Line Connection, 264,000 Miles
- 2007 Mack Model CTP713 Dump Truck, T/A 405 HP, Camelback Suspension, 10-Speed Transmission, Engine Brake, 16ft Steel Box In Great Condition, Tow Hitch Plate With Air Line Connection, 264,000 Miles
- 2007 Mack Model CV713 Dump Truck, Mack AMI 370 HP Engine, Camelback 10-Speed Transmission, Cold Air, Electric Tarbbox, 324,000 Miles
- 2005 Kenworth Model T600 Dump Truck, T/A, Cummins ISX, Eng Brake, 10-Spd, DBL Frame, Hendrickson Spring Over Beam Suspension, 12,000# Frt, 40,000# Rears, 240 In. WB, PTO, Alum Outers, 18 Ft Box
- 2005 Mack Model CV713 Dump Truck, AL 375A 728.0 Cu In., 375 HP, Eng Brake, Allison Autoshift, A/R Cab, Camelback Suspension, 14,320# Frt, 38,000# Rears, 216 In. WB, PTO, Alum Frt, Heil 15 Ft 6 In Box, High Lift Gate, 350,000 Miles
- 2005 Mack Model CV713 Dump Truck, Al 375a 728.0 Cu In., 375 Hp, Eng Brake, Allison Autoshift, A/R Cab, Camelback Suspension, 14,320# Frt, 38,000# Rears, 216 In. WB, PTO, Alum Frt, Heil 15 Ft 6 In Box, High Lift Gate, 350,000 Miles
- 2007 Mack Model Granite Dump Truck, 6 CYL, Diesel, 400 HP, 9-Spd Camelback Suspension, 216 In. WB, PTO, 15 Ft Unused Box

EXCAVATORS

- 2013 Caterpillar Model 320EL RR Excavator, Cab, A/C, Cat C6.6 Diesel Engine, 31" TBG, 49" Dirt Bucket, 9'-6" Stick, Rear View Camera, Zero Swing, 3,187 Hours
- 2012 Deere Model 350G Excavator, Cab, A/C, Aux Hyd, Cat Diesel Engine, TBG, Dirt Bucket, Reverse Camera, 1,887 Hours
- 2012 Deere Model 350G Excavator, Cab, A/C, Aux Hyd, Cat Diesel Engine, TBG, Dirt Bucket, Reverse Camera, 3,060 Hours
- 1995 Caterpillar Model 330L Excavator, Cab, A/C, Cat Diesel Engine, DBG, GP Bucket, 14,572 Hours
- Komatsu Model PC200LC-7 Excavator, Cab, A/C, Aux Hyd, Quick Coupler, Manual Thumb, Diesel Engine, 5,500 Hours
- 2012 OMAL Model MB 501 Hydraulic Excavator, Weight 2,420 LB, 32-40 GPM Required, Fits 200 Class Excavators Including But Not Limited To Cat 320

MINI EXCAVATORS

- (4) 2015 Bobcat Model E42-U Mini Excavator, OROPS, Aux Hyd, Rubber Tracks, Knockdown Blade, Kubota Diesel Engine, 123 Hours, 194 Hours, 263 Hours, 269 Hours
- Caterpillar Model 305 CR Mini Excavator, 3291 Hours

CRAWLER DOZERS

- 2013 Caterpillar Model D6T XW Crawler Dozer, Cab, A/C, Semi U Blade, Cat Diesel Engine, SBG, With Sweeps, Rear Screen, 4,500 Hours
- 2013 Caterpillar Model D6T XW Crawler Dozer, Cab, A/C, Semi U Blade, Cat Diesel Engine, SBG, Recent Undercarriage, With Sweeps, Rear Screen, Trimble Ready, S/N: CAT00D6THSLJ01106, 5,585 Hours
- 2011 Caterpillar Model D5K XL Crawler Dozer, Cab, A/C, Cat Diesel Engine, SBG, 3 Pocket Single Barrel MSR, Straight Blade, Blade Shaker, 230 Hours
- 2007 Caterpillar Model D6T XL Crawler Dozer, OROPS, Cat Diesel Engine, Straight Blade, Drawbar, SBG 9,086 Hours
- (2) 2007 New Holland Model D85LGP Crawler Dozers, OROPS, Diesel, SBG, Rear Screen, Limb Risers, Straight Blade, 434 Hours, 2,000 Hours
- Caterpillar Model D3C LGP III Crawler Dozer, OROPS, 6-Way Blade, Cat Diesel Engine Pyramid Pads 4,532 Hours

BACKHOES

- 2014 JCB Model 3CX Backhoe Loader, OROPS, 4WD, Front Cab Glass, Diesel Engine, Front GP Bucket, Rear 24" Dirt Bucket, 19.5L-24 Rear Tires, 14-17.5 Front Tires, 16 Hours
- 2011 New Holland Model B95B Backhoe Loader, OROPS, Front GP Bucket, Rear Dirt Bucket, Diesel, Out Riggers, 1,615 Hours
- 2007 New Holland Model B95 Backhoe Loader, OROPS, Front GP Bucket, Rear Dirt Bucket, Diesel, Out Riggers, 1,857 Hours
- (2) 2005 Case Model 580M II Backhoe, OROPS, 4WD, Diesel Engine, Front GP Bucket Rear Dirt Bucket, 3,822 Hours, 7,118 Hours
- Case Model 570 LXT Box Blade, 4,666 Hours

SKID STEERS

- 2016 Caterpillar Model 262D Skid Steer Loader, Cab, A/C, Aux Hyd, Quick Coupler, Cat 3.3B Diesel Engine, GP Bucket, 12-16.5 NHS Tires, 30 Hours
- 2012 Caterpillar Model 247B3 Skid Steer, OROPS, Aux Hyd, Cat Diesel Engine, Manual Coupler, 15" Rubber Tracks, 2,300 Hours
- 2012 Cat Model 226B3 Skid Steer, OROPS, Bucket, 2,014 Hours
- 2012 Takeuchi Model TL12 Skid Steer, Cab, A/C, Diesel Engine, Quick Coupler, GP Bucket, High Flo Aux Hyd, 18" Rubber Tracks, 1550 Hours
- John Deere Model 317 Skid Steer, OROPS, Aux Hyd, JD Diesel Engine, GP Bucket, Solid Tires 2,539 Hours
- Bobcat Model 753 Skid Steer, OROPS, Aux Hyd, Diesel Engine
- John Deere Hydraulic Hammer & Broom

RTVs

- (2) 2014 Kubota Model 1140 RTV, 608 Hours, 908 Hours

PAVERS

- Cedar Rapids Model CR451 Paver, 10' Screed, Sliding Operators Station, Cummins Diesel Engine, 46,201 Miles
- Terex Model 452 Paver, 10' Screed, Sliding Operators Station, Cummins Diesel Engine, 60,291 Miles

2012 CAT 226B3 SKID STEER



2012

2012 CAT 247B3 SKID STEER



2012

2012 TAKEUCHI TL12 SKID STEER



2012

**CATERPILLAR 305 CR
MINI EXCAVATOR**



2012

**(4) 2015 BOBCAT E42-U
MINI EXCAVATORS**



2015

(2) 2014 KUBOTA 1140 RTVS



2014

Call 214-247-7330 To Schedule Early Inspection

COMPACTORS

Bomag Model BMP 851 Compactor, Trench Roller, 24" Width, Pad Foot, Hatz Diesel Engine, Umbilical Cord, 332 Hours

BROOMS

Laymore Broom, 6' Broom, Kubota Diesel Engine, Sprayer Tanks, 778 Hours
Broce Model RJ350 Broom, OROPS, 8' Broom, JD Diesel Engine
Terramite Model TSS38 Broom, Canopy, 6' Broom, Diesel Engine, Sprayer Tanks

RIDE ON TRENCHERS

(2) Ditch Witch Model 3700 Ride On Trencher, 48" Digging Depth, Deutz Diesel Engine, Push Blade 631 Hours, 1,161 Hours"

PORTABLE CRUSHING PLANT & SECONDARY CRUSHER

1995 Eagle Model 33D5170 Portable Crushing Plant, Portable 34" X 38" Crusher, John Deere 6-Cyl Diesel Engine, 7' X 16' VGF FDR, 30" X 31" Disc Conv, W/10 HP, Dings 30" Magnet, Hydraulic Leveling, Tri Axle
2002 Cedar Rapids Secondary Roll Crusher

MULCHERS

2002 Viper Model 302 Turbo Mulcher, 5' X 10' 2 Deck, Detroit Diesel Engine, 5' X 14' Grizzly FDR, 24" X 36' Feed Conv, (2) 24" X 26' Side Disc Folding Conv, 30" X 22" Rear Disc Conv, T/A, Catwalks

TRENCH BLOWERS

Buffalo Turbine Trench Blower, 226 Hours

TELEHANDLERS

(2) Skytrak Model 6042 Telehandler, 6,000 LB Lift Capacity, Orops, Cummins Diesel Engine 5,170 Hours, 5,343 Hours
JLG Model 5519 Telehandler, OROPS, Deutz Diesel Engine, Forks

BOOM LIFT

2002 Terex Model TB 60 Boom Lift, 60' Height, Deutz Diesel Engine, 1,920 Hours

WIRELINE TRUCKS

(4) 2007 International Model 7400 Wireline Truck, Sleeper Cab, T/A, Eaton Fuller 10-Speed Manual Trans, International 9.3 L Diesel Engine, With Artex Wireline Body, 2007 New Age AC Generator, 9182 Hours, 74,480 Miles, 102,560 Miles, 120,576 Miles, 152,550 Miles

CRANE TRUCKS

(2) 2007 International Crane Trucks, Model 7500, Day Cab, T/A, International 9.3 L Diesel Engine, Eaton Fuller 8-Speed Trans, With Manitex Crane Model 124WL - 30 Ton, 103' Reach, Hyd Out Riggers

(2) 2006 Sterling Crane Trucks, Model L7500, Day Cab, T/A, Cat Model C-7 Diesel Engine, Eaton Fuller Trans, With National Crane Model 900A - 26 Ton, 120' Reach, Hyd Out Riggers

CEMENT TRUCK

2004 International Model 7600 Cement Truck, 6x4 White Eaton 8 Speed Heavy Duty Cement Mixer, 244,015 Miles

WATER TRUCKS

2005 International Model 4200 Water Truck, 2,000 Gal, Day Cab, S/A, Navistar 6.0 L Diesel Engine, Front And Rear Gravity Bar, 15,757 Miles
1999 Freightliner Water Truck, 2,000 Gal, Day Cab, S/A, Diesel Engine, Front And Rear Gravity Bar

WINCH TRUCK

Kenworth Model W900B Winch Truck Tractor, Day Cab, T/A, Eaton 8-Spd Hi/Lo Manual Trans, Cat Model 3406E Diesel Engine, Engine Brake, Air Ride Susp, Manual Window/Door, With Braden Model AMS20-18B 22.5 Ton Winch, PTO, Head Ache Rack, Dual 120 Gal Fuel Tanks, Dual Exhaust Stack, 11R24.5 Tires, Aluminum Wheels

CRASH TRUCK

GMC Model Topkick Crash Truck, Day Cab, Auto Trans, Cat Model 3116 Diesel Engine, S/A, With Flat Bed, Scorpion Truck Mounted Attenuator, 214,644 Miles

LUBE TRUCKS

2002 International Model 4300 Lube Truck, Day Cab, S/A, Navistar 7.6 L Diesel Engine, (4) Product Tanks, Air Compressor, Grease Pump, 378,026 Miles

ROUND BOTTOM END DUMP TRAILERS

2016 Southern Welding Round Bottom End Dump Trailer, 34' ½ Round Steel Dump Trailer, High Lift Gate
2009 CTS Model Hrd-32 Round Bottom End Dump Trailer
2003 Trail King Model SHR 32 Round Bottom End Dump Trailer
2003 Trail King Model SHR 32 Round Bottom End Dump Trailer

LIVE BOTTOM TRAILER

2005 Trail King Model LD2-4202-47 Live Bottom Trailer, 84 Cu Yd, 42' Length, 103" Wide, 47" Belt, T/A, Air Ride Susp, Aluminum Construction, Top Hinged Hyd Tailgate, 285/75R24.5 Tires

LOWBOY TRAILERS

2012 Fontaine Model Magnitude 55H 26 60 Lowboy, 55 Ton, Hyd RGN NGB, 25' Deck, 14' Over Wheels, Boom Trough, Air Ride Susp, Tri Axle With 2012 Fontaine Flip Axle
2010 Talbert Lowboy, 55 Ton, Pony Motor, 26' Well, Tri Axle, Covered Rear Wheels
2007 XLPS Lowboy
2006 Fontaine Model Lowboy

**(2) 2007-11 NEW HOLLAND
B95B BACKHOES**



2011

**2011 CATERPILLAR D5K XL
230 HOURS**



230 HOURS

**(2) 2007 NEW HOLLAND D85LGP
CRAWLER DOZERS**



2007

Inspection: 1/23 - 9:00AM to 4:00PM Or Anytime By Appointment

2016 SOUTHERN ROUND BOTTOM END DUMP TRAILER



2016

(4) 2006 - 07 STERLING & INTERNATIONAL CRANE TRUCKS



2006

(50+) TRAILERS AS NEW AS 2016



50+ Trailers

Removal Deadline - February 7th, 2017

STEP DECK TRAILERS

2013 Wade Model WHT-53FT Step Deck, 53' Length, 97" Width, Steel/ Wood Deck, Tri Axle, GVWR 105,000 LB, Spring Ride Susp, 11R22.5 Tires
2001 Transcraft Step Deck, 48' Length, 102" Width, Steel/ Wood Deck, T/A, Spread Axle, Spring Ride Susp, 255/70R22.5 Tires

SLIDE AXLE TRAILER

2012 XL Specialized Model XL 70 SA Slide Axle Trailer, 53' Length, 42', 102" Width, Steel/ Wood Deck, Tri Axle, 92,990 GVWR, Air Ride Susp, With Winch

FLAT DECK/BED TRAILERS

2005 Fontaine Model RFTW-1-8048WSAWK Flat Deck Trailer, 48' Length, 98" Width, Steel/Wood/Aluminum Deck, T/A, Spread Axle, Air Ride Susp, 11R22.5 Tires
(2) 2002 Great Dane Model GP240 Flat Deck Trailer, 40' Length, 91" Width, Steel Deck, T/A, Spring Susp, 66,000 LB GVWR, 11R22.5 Tires
2000 Wabash Flat Deck Trailer, 48' Length, 98" Width, Steel Deck, T/A, Spread Axle, Air Ride Susp, 11R22.5 Tires
2000 Wabash Flat Deck Trailer, 48' Length, 98" Width, Steel/Wood/Aluminum Deck, T/A, Spread Axle, Air Ride Susp, 11R22.5 Tires
1999 Fontaine Model TP-4-4880SLWK Stretch Flat Bed Trailer, 48' Length, Extendable, 98" Width, Steel/Wood Deck, T/A, Spread Axle
1999 Utility Flatbed, 48' Length, 98" Width, Steel/Wood Deck, T/A, Spring Susp, 78,000 GVWR, 11R22.5 Tires
Transcraft Model TL-2000 Flat Deck Trailer, 45' Length, 91" Width, Steel Deck, Spread Axle, T/A, Air Ride Susp, 11R24.5 Tires
Lufkin Model FL-11 Flat Deck Trailer, 45' Length, 91" Width, Steel/ Wood Deck, Spread Axle, T/A, Air Ride Susp, 80,000 GVWR, 11R24.5 Tires
Great Dane Model GPMS-245 Flat Deck Trailer, 45' Length, 91" Width, Steel/Wood, T/A, 88,000 GVWR, Spread Axle, Air Ride Susp, 11R22.5 Tires
Fontaine Model FTW-4-8045WSAK Flatbed, 45' Length, 91" Width, Steel/Wood/ Aluminum Deck, T/A, Spread Axle, Air Ride Susp, 73,682 GVWR, 11R22.5 Tires

STINGER TRAILERS

2005 Trail King Model TK22FA Stinger, Spreader Bar and Pin On Axle, Very Good Condition
2007 Stinger Trailer

GOOSENECK TRAILERS

PJ Gooseneck Trailer, 22'
1992 Gooseneck Trailer

FLIP AXLE TRAILER

2012 Fontaine Flip Axle, With Unit 728

FLOAT TRAILER

Dorsey Model 40TAFB Float Trailer, 40' Length, 92" Width, T/A, Steel Deck, Tail Roll, 70,000 LB GAWR

POLE TRAILERS

Nabors Pole Trailer, 80' Adj Length, 92" Wide Cap, T/A, Steel Construction, Spring Susp
Elder Model 2999 Pole Trailer, 80' Adj Length, 92" Wide Cap, T/A, Steel Construction, Spring Susp

MISC TRAILERS

2006 Great Dane Trailer
2002 Great Dane Trailer
Fontaine Model FT4-48048WSAK Trailer, 45' Length, 91" Width, Steel/Wood/Aluminum Deck, T/A, Spread Axle, Air Ride Susp, 11R22.5 Tires
Freuhauf Model PBA-NT25-45N Trailer, 45' Length, 91" Width, T/A, Sliding Axle, Steel Deck, Air Ride Susp
Sibert Booster Trailer
Great Dane Trailer, 45' Length, 90" Width, Steel/ Wood Deck, Sliding Axle, T/A, Spring Susp, 11R24.5 Tires
Great Dane Trailer
Utility Model FS2CHE Trailer, 48' Length, 98" Width, Steel Deck, T/A, Sliding Axle, GVWR 70,000 LB, Spring Susp, 11R22.5 Tires
Utility Trailer, 12', T/A

PICK UPS

2012 Ford Model F250 Pick Up, Crew Cab, 4wd, White, 6.7 Diesel, Automatic, 90,835 Miles
2009 Chevy Model 2500 Pick Up

FORKLIFTS - SCISSOR LIFTS & MISCELLANEOUS

2008 Caterpillar Model C5000 Forklift, 2507 Hours
(4) Skyjack Model SJ III-4832 Lifts
JLG Model 2646 Scissor Lift
Mitsubishi Model 25 Forklift, 2,633 Hours
Genie Model 5519 Forklift
Dynapac Model LP8500 Trench Roller
Magnum Model Gt864 Light Tower, 4489 Hours
Ingersoll Rand Model 185 Air Compressor, 5,955 Hours
Ingersoll Rand Model 185 Air Compressor, 1390 Hours
(5) Refuse Bin, 40', Open Top

GENERATORS

Generac Generator, 735 Miles
Power Pro Model 100 Generator, 2177 Hours

FREIGHTLINER & INTERNATIONAL WATER TRUCKS



2005

Financing Available Call 512-284-7688



(2) SKYTRAK 6042 TELEHANDLERS



6,000 LB

Financing Available For Most Credit - Call 512-284-7688 - Rob Childers

AUCTION: 1/24
ONSITE & WEBCAST
Conroe, TX - 10:00AM



SALES • REMARKETING • FLEET MANAGEMENT • FINANCE

1213 Ranch Road 620 South, Suite 105
 Lakeaway, TX 78734
 Tim Watters TX License #17555



2015



2012



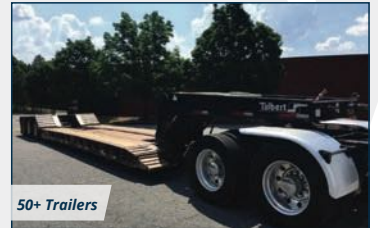
2014



2016



2007



50+ Trailers

**(40+) TRUCK TRACTORS • (11) DUMP TRUCKS • EXCAVATORS • DOZERS • MINI EX
 BACKHOES • SKID STEERS • RTVS • WIRE LINE TRUCKS • PAVERS • BROOMS
 COMPACTORS • TRENCHERS • CRUSHERS • LIFTS • CRANE TRUCKS • WATER TRUCKS
 CEMENT TRUCKS • DUMP TRAILERS • LOWBOYS • (50+) TRAILERS • FORKLIFTS & MORE**

\$7MM AUCTION VALUATION

HUGE HOUSTON AREA TRANSPORTATION, EXCAVATION & TRUCK AUCTION



2013



2012



2013

AUCTION **ONSITE & WEBCAST • January 24th, 2017 10:00 AM CST**
www.terrapointllc.com or 877.772.5998

Inspection: 1/23 - 9:00AM to 4:00PM or by appointment • 2405 Hackberry Lane, Conroe, TX



40+ Tractors



2013



(10) Dump Trucks

Online Bidding Available with



SALES • REMARKETING • FLEET MANAGEMENT • FINANCE

877.772.5998

Buyers Premium: 2.5% Max \$2,000/Lot
For Terms of Sale - www.terrapointllc.com